

TIME SETTING

1. Open the CamHipro app.
2. Go to **[Setting]** camera -> **[Time setting]**.

Time setting

3. Select the correct time zone and click **[Done]**.
4. Save the time settings by pressing the button **[Apply]**.
5. Go to the **[Time settings]**.
6. Check if the time is correct, if not, press button **[Sync with phone time]** and press the **[Apply]** button.

Sync with phone time

FAQ

1. Why is the device offline?

Check:

- Camera is connected correctly to the power source
- Configuration was performed correct.

2. SD memory card can't be read?

Check your SD card to see if it meet the requirements quality standard, when the Wi-Fi signal isn't good, it can't be identified.

3. Camera disconnects?

Check the power and Wi-Fi signal, next restart the camera. If this method doesn't work, please remove the device and add to the app.

4. Video intermits or runs slowly.

If the video is still loading, check the connection WiFi.

5. How can other people watch the video?

Share your account in the app with other people.

6. How many people can use the account at the same time?

There is no limit.

SECURITY PROCEDURES

USE THE CORRECT POWER SOURCE

The input voltage of the camera is 12V DC/1A or 12V DC/2A. Remember to use only the original power adapter included with the product or similar with the above parameters. Incorrect connection may cause damage to the camera.

USE CAMERA CAREFULLY

Use the camera according to the instructions. Don't hit the camera, don't shake it, etc. Improper use or storage of the camera may lead to damage.

SD CARD

Use only SD card recommended for use with camera or other with minimum speed class of 10. Using other cards may lead to incorrect recording on the memory card.

PROTECTION FROM WEATHER CONDITIONS

To protect properly cables from weather conditions for example rain, snow or moisture. We recommend the use of matching junction boxes. Improper protection can lead to permanent equipment damage and lost of guarantee.

CAMERA WORK ENVIRONMENT

Camera can be used at temperatures between -20°C-+60°C and moisture 10%-90%.

DON'T USE STRONG LIQUIDS FOR CLEANING CAMERA

If the camera is dirty, clean mouistre cloth. If dirt is resistant, use a mild detergent and gently wipe the camera.

DON'T POINT TOWARDS THE SUN

Don't point the camera at the sun or other sources of very bright light. Stains may appear even if the camera is off, sensor may get damaged.

DON'T HANG THE CAMERA IN THE PLACE OF INTERFERENCE

If the camera is installed near devices that emit strong electromagnetic fields, example wireless communication devices, camera may not work properly.

intron



USER MANUAL for Camera

CAMERA CONNECTION

1. Unscrew the screw from the flap and insert the SIM card and sd card into the slots until you hear a 'click'.
2. Make sure the gasket adheres properly and screw on screw to the cover.
3. Connect the camera to the power, using the power supply included in the set.

CAMERA CONFIGURATION

1. Download the [CamHipro] app from the Play Store / App Store and open it.



Android



iPhone

2. On the main screen of the app click [+].



3. Select [Kamera 4G].

4G camera

4. Select [Scan the QR code].



Scan QR code

Scan the device QR code to get the UID n...

5. Click [Confirm add].

Confirm add

6. Enter the camera name and click [Confirm].

Confirm

CHANGE PASSWORD ON THE WIFI NETWORK

1. Connect to the WiFi network created by the camera. The default password is [1234567890].
2. Enter your IP address from your browser and log in to the router panel with the password [admin].

← ↻ 192.168.100.1

3. Go to [WiFi Settings].

Wi-Fi Settings >

4. In the field [Network Name (SSID)] type the name of the WiFi network, and in the [Pass Phrase] field the password for the WiFi network.

Network Name(SSID) *

MIFI_5798

Pass Phrase *

.....

5. Click [Apply].

Apply

PLAYBACK OF RECORDING FROM MEMORY CARD

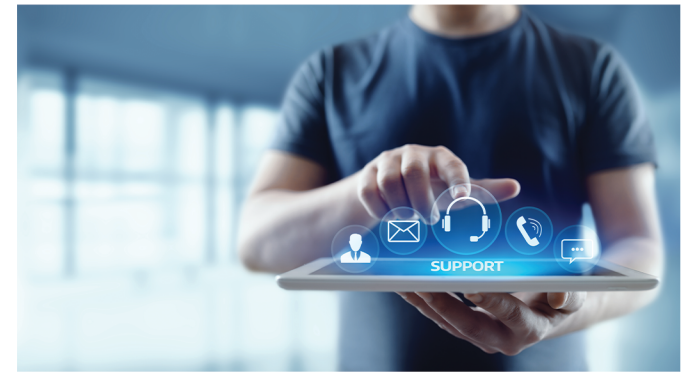
1. In the [CamHipro] application, click the [SD card] icon.



2. In the bottom right corner, click the icon [magnifying glass].



3. Select the [recording range] you are interested in.



Contact:



+48 85 677 70 55



support@zintronic.com

<https://zintronic.com/technical-support>

Technical support to our customers
from Monday to Friday at 8.00-16.00

IMPORTER:

Zintronic

ul. Modzelewskiego 2
15-535 Białystok, Poland

WWW.ZINTRONIC.COM



Declaration of conformity: This product and, if applicable, the supplied accessories are marked with the "CE" mark and therefore comply with the applicable harmonised European standards listed in the Low Voltage Directive 2006/95/EC, EMC Directive 2004/108/EC, RoHS Directive 2011/65/EU 2012/19/EU (WEEE Directive): In the European Union, products marked with this symbol cannot be disposed of together with municipal waste. For proper recycling of this product, return it to your local supplier at the time of purchase of equivalent new equipment or dispose of it at designated collection points.