

CONFIGURING THE TIME ON CAMERA

1. Enter the [iCSee] app.
2. Go to camera settings.



3. Select the [About Device] tab.



4. Click on the underlined time to synchronize the time in the camera.

Device Time 2023-12-15 12:26:13
Right-click to sync device time

5. Confirm the time synchronization.

FAQ

1. Why is my device offline?

Check if:
- The device is connected correctly to the power supply
- Configuration was done correctly.

2. SD memory card can not be read?

Please check your SD card to see if it meets the requirements quality, when the Wi-Fi signal is not stable, you can not also identify it.

3. Is the camera disconnecting?

Check the power supply and the Internet network, and then do not restart the camera. If that doesn't work, please remove the device and add it again in the application.

4. Video interrupts or video running slow.

If the video is still loading/buffering, check the connection internet.

5. How can other people watch the video?

Share your account in the app with others.

6. How many people can use the account at the same time?

There are no restrictions.

PRECAUTIONS

USE THE RIGHT POWER SOURCE

The input voltage of the cameras is 12V DC/1A OR 12V DC/2A. Remember to use only the original power supply supplied with the product or another with the above parameters. Connect the camera to an appropriate power source. Incorrect connection of the camera threatens its failure or damage.

HANDLE CAMERA WITH CARE

Use the camera according to the instructions. Avoid hitting the camera, shaking it, etc. Improper handling or storage of the camera may result in damage to the camera.

STORAGE MEDIA USAGE - SD CARD

Use only memory cards recommended for working with cameras or others with a speed class of at least 10. Using other cards may lead to incorrect storage of material on the memory card.

PROTECTION AGAINST FACTORS ATMOSPHERIC

Camera connection cables should be protected against the influence of weather conditions, i. e. rain, snow or moisture by using recommended spacers. Improper protection can result in permanent damage to the equipment and loss of service warranty.

CAMERA WORKING ENVIRONMENT

The cameras are designed for use in environments with temperatures between -20°C - $+60^{\circ}\text{C}$ and humidity 10%-90%

DO NOT USE STRONG OR ABRASIVE AGENTS CLEANERS FOR CLEANING THE CAMERA BODY

If the camera is dirty, clean it with a damp cloth. If dirt is resistant, use a mild detergent and gently wipe the camera.

DO NOT POINT THE CAMERA TOWARDS THE SUN

Do not point the camera at the sun or other sources of very bright light. This threatens the appearance of stains, even if the camera is switched off, and consequently damage the camera matrix.

DO NOT PLACE THE CAMERA IN PLACES OCCURRENCE OF DISTURBANCES

If the camera is installed near devices emitting electromagnetic fields, this may lead to malfunctioning of the camera.

intron



USER MANUAL for cameras

CONNECTING THE CAMERA

1. Connect the camera to power using the power adapter included in the kit.
2. Download the [iCSee] app from the Play/App Store and launch it.



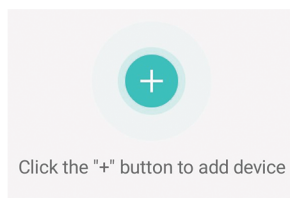
Android



iPhone

CAMERA CONFIGURATION

1. Connect to the WiFi network you want the camera to connect to.
2. Launch the [iCSee] application and click the [+] button to launch it. button to add cameras.

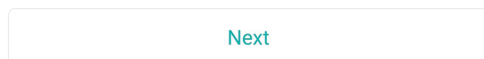


3. Select [WiFi Camera].



Wi-Fi Camera

4. Press [Next Step] and then [Next Step] again.



5. Enter the password for the WiFi network and confirm with the button [OK].

WiFi network: Zintronic
Password:
[OK]

6. Read the instructions to scan the QR code and press the [Next] button.

7. Scan the QR code from your phone's display using the camera.

8. Set a password for the camera and confirm with the button [OK].

[OK]

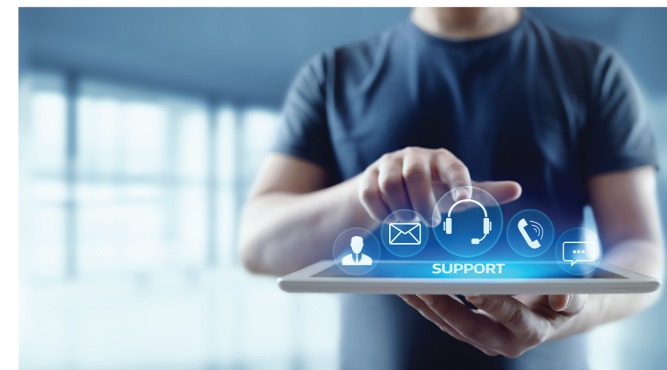
9. Set the camera name and confirm with the [Save] button.

10. Set the recording method on the memory card and confirm [Next] button.

- Regular (continuously recording)
- Alarm (Record only when an alarm is triggered)

11. Select whether you want to start motion detection on and confirm [Done] button.

Alarm push On or Off



Contact:

+ 48 85 677 70 55

support@zintronic.pl

<https://zintronic.com/technical-support>

We provide technical support to our customers
Monday to Friday from 8am to 4pm

IMPORTER:

Zintronic

K. Modzelewskiego St. 2
15-535 Białystok, Poland

WWW.ZINTRONIC.COM



Declaration of conformity: This product and the accessories supplied, if applicable, are marked with the "CE" symbol and therefore comply with the applicable harmonised European standards set out in the Low Voltage Directive 2006/95/EC, the Electromagnetic Compatibility Directive 2004/108/EC, the RoHS Directive 2011/65/EU 2012/19/EU (WEEE Directive). For proper recycling of this product, take it to your local supplier at the time of purchase of equivalent new equipment or take it to designated collection points.