

## PLAYBACK RECORDINGS FROM THE NVR

1. Log in to the NVR.
2. Go to the [Playback] tab.
3. Select a channel on the left.
4. Select a day from the calendar below.
5. On the right side under the preview, select the type of recording.



6. Select the time of interest on the track.

## PLAYBACK OF BROWSER RECORDINGS

1. Log into the registrar.
2. Go to [Playback] tab.
3. On the left, select a channel.
4. Select a day from the calendar.
5. Under the calendar, select the type of recording and press "magnifying glass".
6. Press the [Play] button, located under the left bottom corner of the preview.

### FAQ

#### 1. Hard drive not detected.

If the system does not detect the hard disk, check whether the cable data transfer cable and hard disk power cable are properly connected or whether the drive is supported according to the specification by the NVR.

#### 2. Does playing back recordings stop recording?

No. You can play back recordings while recording.

#### 3. Can the NVR get damaged from excess heat?

Some heat is generated during NVR operation, please set the NVR in a place that is ventilated. Overheating of the device may lead to battery burning, explosion or risk of burns.

#### 4. Is it possible to delete part of the video recording from NVR?

You cannot delete part of the video recording. If you need to delete all of the video recording, you can format the hard drive.

#### 5. How can other people watch the video?

Share your application account with other people.

#### 6. How many people can use the account at the same time?

There are no restrictions.

## PRECAUTIONS

### USE A PROPER POWER SOURCE

The input voltage of the recorder is DC12V, DC52V or DC48V. Be sure to use only the original power supply included with the product or another one with the same characteristics as the original one. Improper connection of the recorder risks failure or damage to the recorder.

### RECORDER'S WORKING ENVIRONMENT

Use the recorder according to the instructions. Improper handling or storage of the recorder may result in damage to the recorder. Transport, use and store the recorder only in acceptable humidity (10%~90%) and temperature (-10°C~+55°C) conditions. Install the devices in well-ventilated areas, do not block the air supply to the device.

### REGISTRAR SECURITY

Do not install or place the recorder in areas directly exposed to sunlight or near heating devices (or those that emit significant heat). Do not install or place the devices in damp, dusty or smoky places. Install the devices in a horizontal position, in places that are not subject to vibration, preventing the devices from moving.

### DO NOT USE STRONG OR ABRASIVE CLEANERS CLEANERS TO CLEAN THE RECORDER

When cleaning the equipment, make sure that the device is turned off and completely disconnected from the power supply. Do not use volatile solvents to clean the device, do not use strong or abrasive cleaners. This may cause damage to the surface coating. Clean the circuit boards, connectors of all kinds and the fan regularly with a soft brush.

### DO NOT PLACE THE CAMERA IN AREAS PRESENCE OF INTERFERENCE

If the recorder is installed near equipment that emits electromagnetic fields, such as wireless communication devices, it may lead to the occurrence of irregularities in the operation of the recorder.

# **intron**



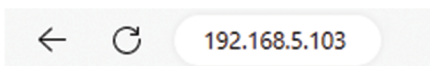
## INSTRUCTION MANUAL for NVR

## CAMERA CONFIGURATION

1. Download and install [SearchTool]  
(<https://zintronic.com/bitvision-cameras>).
2. When you start the program in the list, the line will appear with the camera data. Choose the camera you want configure.

001 KL5\_1ND\_ALH0L0A0T0Q0... 192.168.5.103

3. On the left side of the program, select the option [NetWork Param] and select [DHCP].
4. In the [Password] field, enter the password for the camera, the default admin and confirm with the [Modify] button.
5. Wait a minute and click the [Refresh] button.
6. Copy the address from the [IP Address] column to the browser Internet.



7. In the login window, enter the default data:  
User: admin  
Password: admin

8. Press the [Login] button.

## CHANGE USER PASSWORD

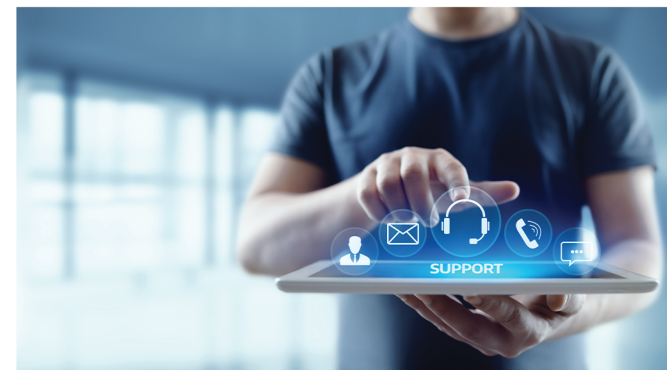
1. Log in to the camera.
2. Go to [Options] -> [System] -> [Security].
3. Press the [Edit] button for the given user.
4. Fill in the data accordingly.
5. After filling in the data, click the [Export] button.
6. Confirm the password change with the [OK] button.

## ADDING A CAMERA TO THE APPLICATION

1. Download [BitVision] from the Play Store/App Store.



2. Expand [Menu] at the top right corner and press [Please login first].
3. Press the [Register] button.
4. Enter the data accordingly:  
Enter your e-mail – enter your e-mail.  
Enter the confirmation code – enter the code that you will receive in an email after clicking [Send code] button.  
Enter a new password – create a new password for your account.  
Re-enter your password – create a new password for your account.
5. Accept the terms of use of the application.
6. Press the [Register] button.
7. Log in to the newly created account.
8. Expand [Menu] in the upper left corner and click [Device Management].
9. Press [+ ] at the bottom of the screen.
10. Press [Add SN].
11. Scan [QR Code] from camera sticker or box.  
Set device name: camera name to identify in applications.  
Enter the device name: the camera username, default "admin".  
Enter device password: camera password, default "admin".  
Confirmation code on the label: CAPTCHA code found on a sticker.
12. Press the [Add Device] button.
13. Go back to the [Live View] tab and click on a rectangle with a yellow border.
14. Expand the [My Devices] tab.
15. Select your camera and press the [Finish] button.



### Contact:

+ 48 85 677 70 55  
support@zintronic.pl

<https://zintronic.com/technical-support>

We provide technical support to our customers  
from Monday to Friday at 8.00 - 16.00

IMPORTER:  
**Zintronic**  
ul. K. Modzelewskiego 2  
15-535 Białystok, Poland

[WWW.ZINTRONIC.PL](http://WWW.ZINTRONIC.PL)



Statement of Conformity: This product and, if applicable, the supplied accessories, are marked with the "CE" symbol, and therefore comply with the applicable harmonized European standards listed in the Low Voltage Directive LVD 2014/35/EU, EMC Directive 2014/30/EU, RoHS Directive 2011/65/EU 2012/19/EU (WEEE Directive): In the European Union, products marked with this symbol may not be disposed of with municipal waste. For proper recycling of this product, please return it to your local supplier when you purchase equivalent new equipment, or dispose of it at designated collection points.