

Adding camera to HiP2P software (PC)

This manual refers to Zintronic 'A' & 'P' series.



Table of contents:

Section I - Adding camera to HiP2P software

- Installation and adding camera to HiP2P software.....
- How to get live view in HiP2P software.....

Installation and adding camera to HiP2P software

- Download HiP2P software from <https://zintronic.com/camhi-cameras> (section “Dedicacted software” – HiP2P).
- Go through installation and don't forget to mark the most important options such as choosing your preferred language.
- When installation ends, run the programme.

Open HiP2P programme



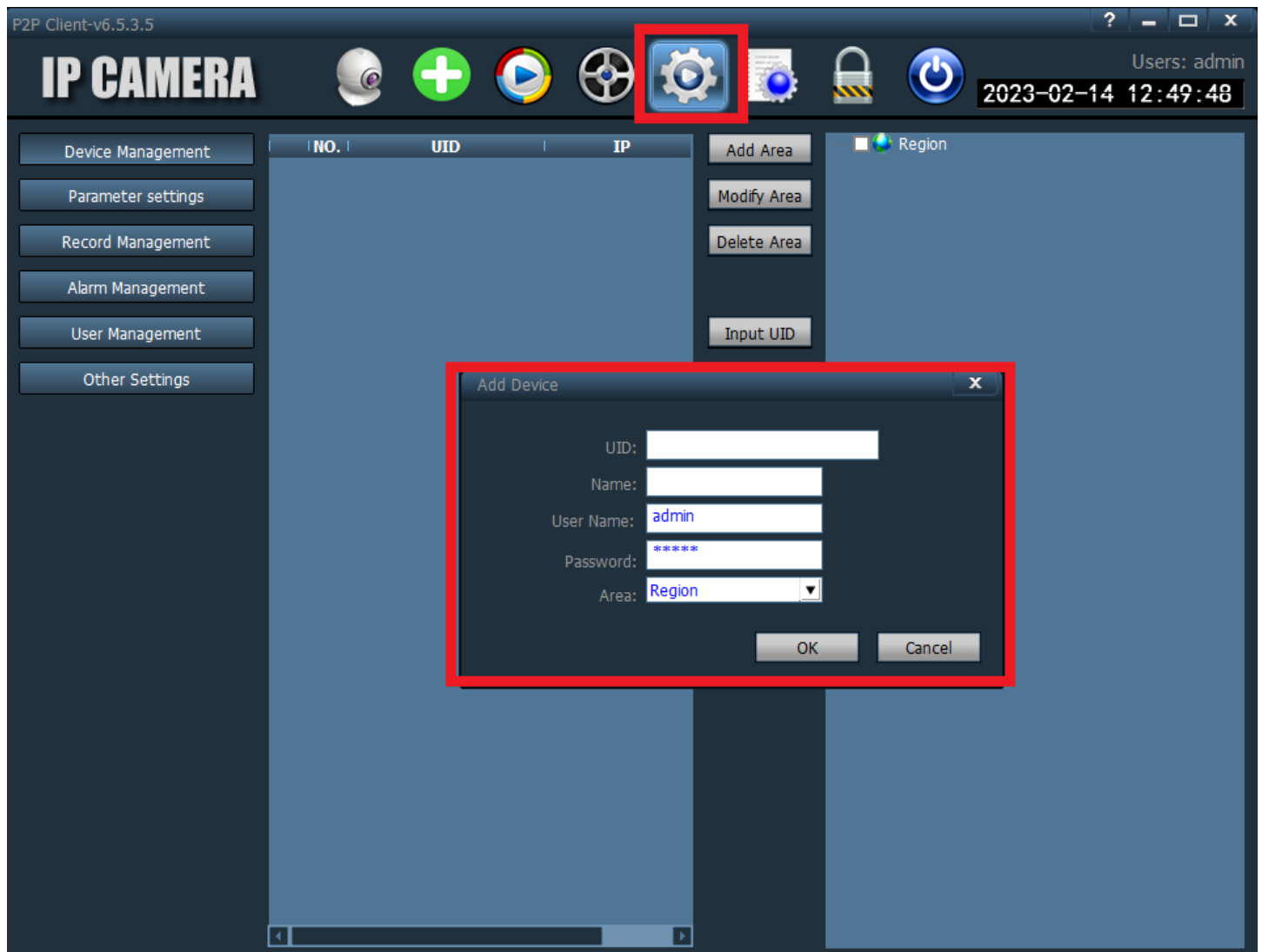
- When the programme is running and you try to use any other options, it will show a pop-up window to log into the programme.
- Click "OK" and leave password box empty.
- After that the programme lets us choose every option.

View of the programme with logging window



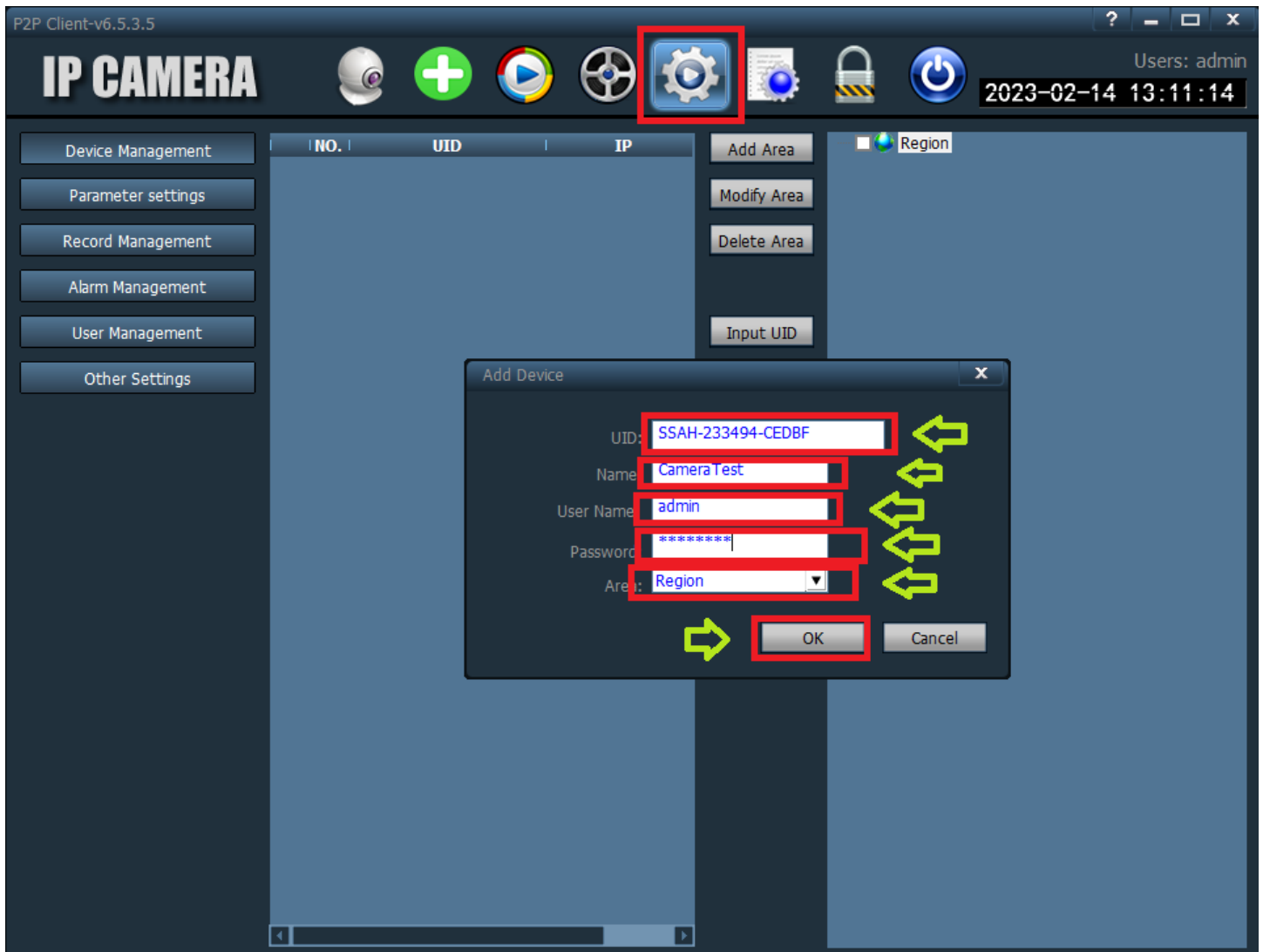
- Choose the icon “Config”:
- Click the button “Input UID”.
- It will show the a pop-up window with details of the camera to fill in
- Fill in the required details and click “OK”.

Camera adding screen



- **UID:** UID number from the camera/box for example: SSAC-xxxxxx-xxxxx
- **Name:** give your own name to the camera
- **User name:** admin
- **Password:** fill in your own password which was set by adding camera to CamHiPro application
- **Area:** Region
- At the end click "OK".

Adding camera with proper details



How to get live view in HiP2P software

- Adding camera to live view screen:
- To add camera and get live view choose “Preview” icon
- Camera we added before will show on the left side
- Click on the camera twice

Proper adding to HiP2P software



- After that camera is properly added and live view will be available.

ul. J. K. Branickiego 31A
15-085 Białystok

+48 (85) 677 70 55

biuro@zintronic.pl

