

How to insert SD card to A & P camera series (all models)

This manual refers to Zintronic® 'A' & 'P' product series.



Table of Contents:

Section I – SD card insertion.

- P5 camera SD card insertion.....
- P5 Pro camera SD card insertion.....
- P4 camera SD card insertion.....
- P4 M camera SD card insertion.....
- A5 camera card insertion.....

- P5 camera SD card insertion.

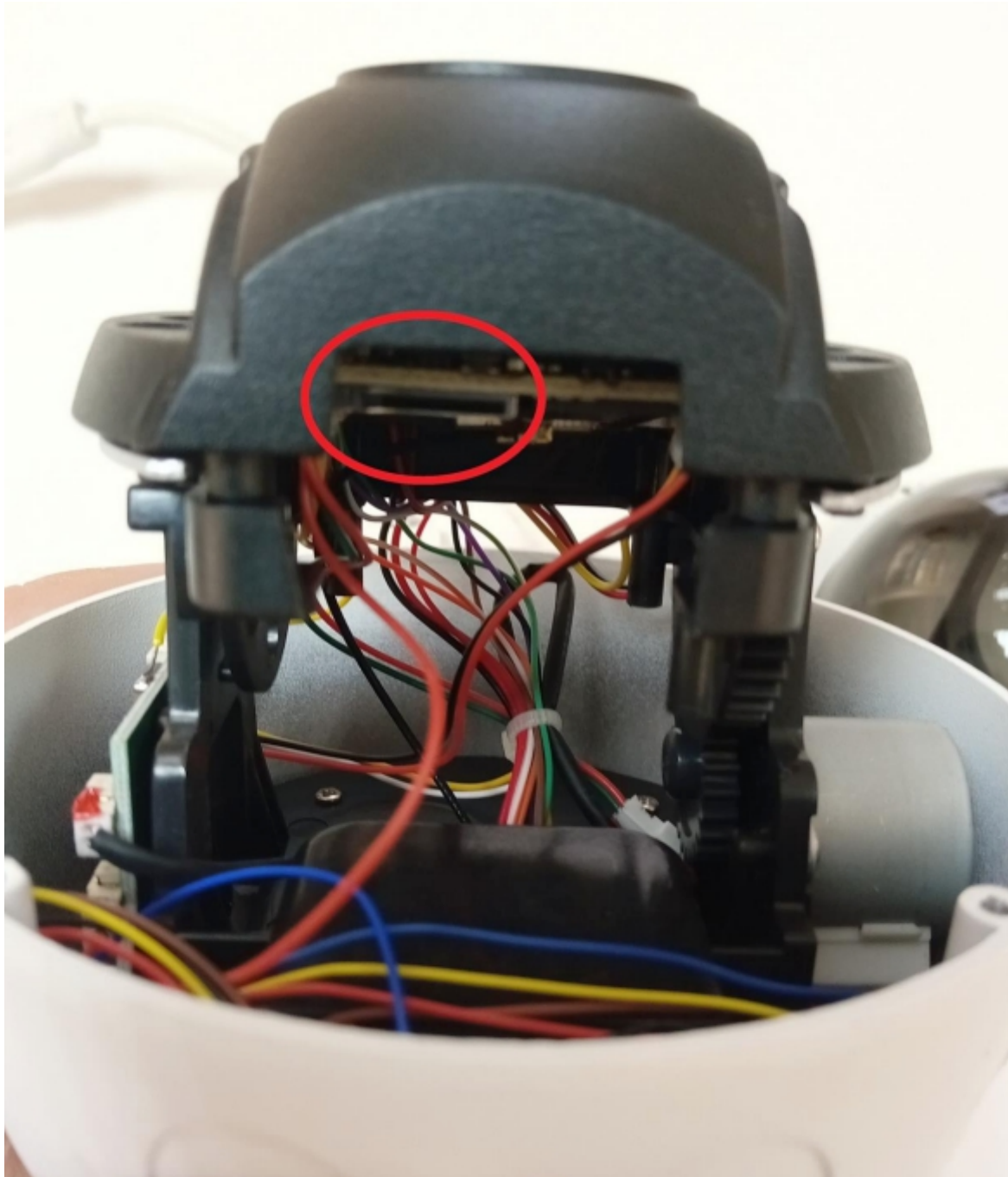
1. Turn off the camera by unplugging DC 12V, take off the dome by unscrewing four screws shown on the photo below.



2. After you took of the dome turn camera eye to face you (like on the photo).



3. Move the camera eye up to uncover SD slot.



4. Insert SD card (golden pins facing eye of the camera, as shown on picture).



5. Screw back the dome, but be careful not to do it in a bad way. You need to fit the cut in the camera blackfilm to camera eye, as shown on picture below.



- P5 Pro camera SD card insertion.

1. Unscrew two screws on SD card slot, using hex key which is inside your camera box.



2. After unscrewing them, you will see SD card slot.



3. Insert SD card (golden pins facing audio speaker).



4. Screw back the SD card flap.

- P4 camera SD card insertion.

1. Unscrew two screws from SD card flap.



2. After unscrewing you will see SD card slot.



3. Insert SD (golden pins facing eye of the camera).



- P4 M camera SD card insertion.

1. Unscrew two screws from SD card flap.



2. You will see SD card slot after doing that.



3. Insert SD card (golden pins facing camera speaker) assemble SD card flap and screw it to the body of the camera.

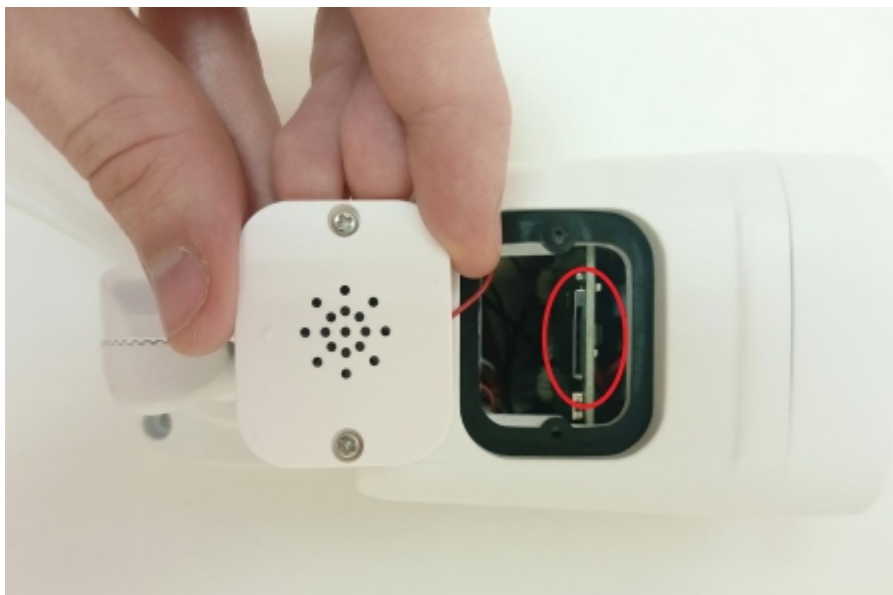


- A5 camera card insertion.

1. Flip the camera upside down, you will see SD card flap, unscrew two screws as shown on picture below.



2. Take away the flap.



3. Insert SD card (golden pins facing the top of the camera).



4. Assemble the SD card flap and screw it to the camera body, remember to screw flap on with the dot facing towards camera holder.

zintronic

ul. J. K. Branickiego 31A
15-085 Białystok

+48 (85) 677 70 55

biuro@zintronic.pl